

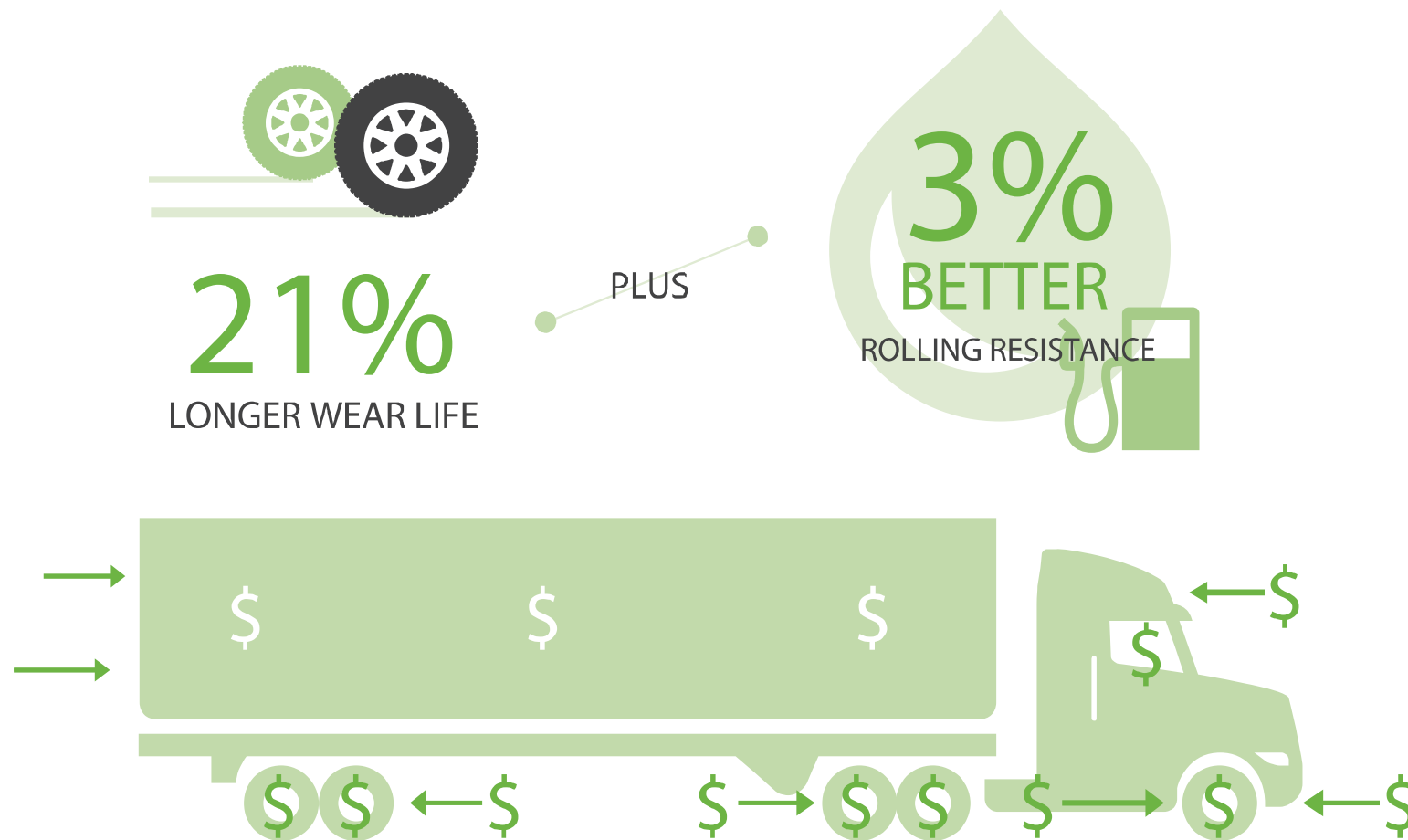
**BRIDGESTONE**

**R283A<sup>TM</sup>**



Best of Both Worlds.

# R283A™ Ecopia vs. R283 Ecopia\*

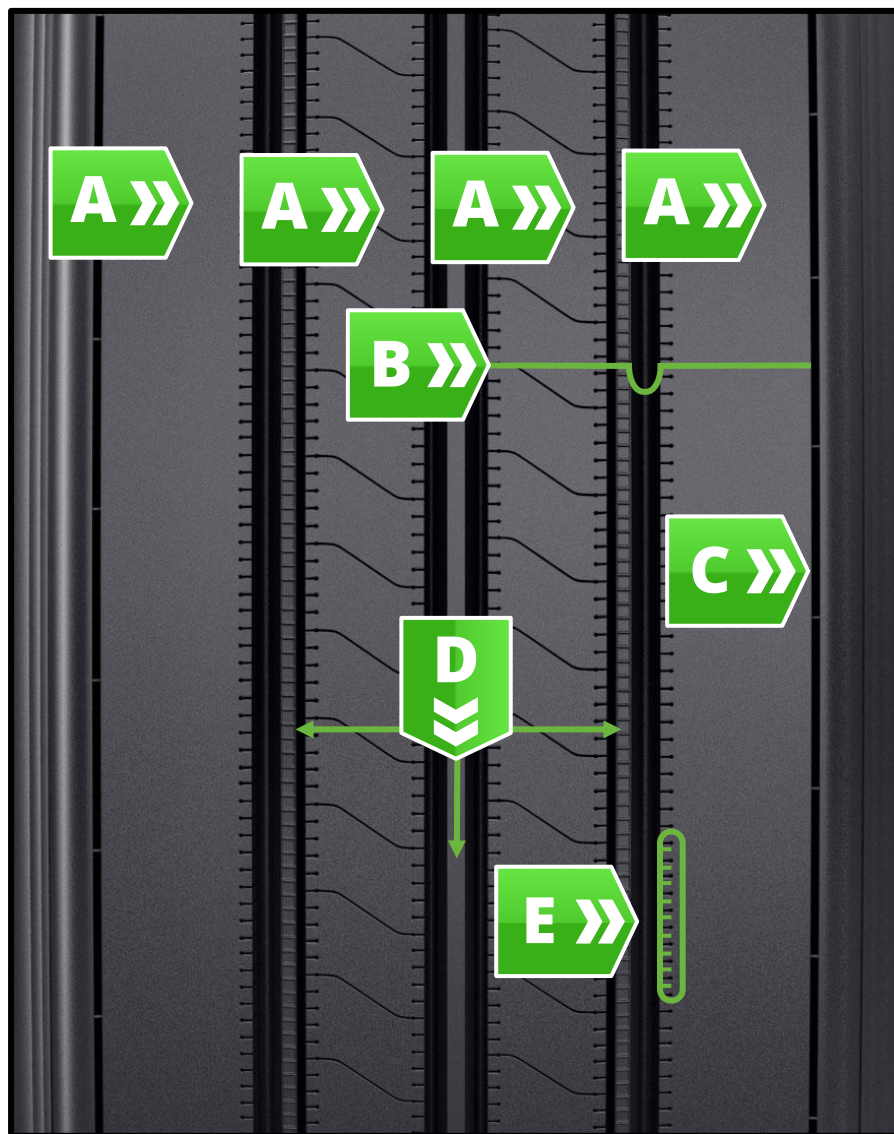


# R283A™ Ecopia is a steer tire that gives you the best of both worlds

## Innovations include:

- Engineered to deliver long wear life
- The fuel efficiency benefits Ecopia tires are known for
- Delivers significant wear life improvement
- Improves rolling resistance, compared to the previous generation





## Ecopia R283A™

**A »»**

- Four-Rib Design
  - Enhances tread stiffness for improved fuel economy

**B »»**

- Optimized Tread Depth and Width
  - Maximize tread volume for long original life and lower tread wear cost per mile

**C »»**

- Defense Side Groove
  - Minimizes shoulder edge wear for long original life

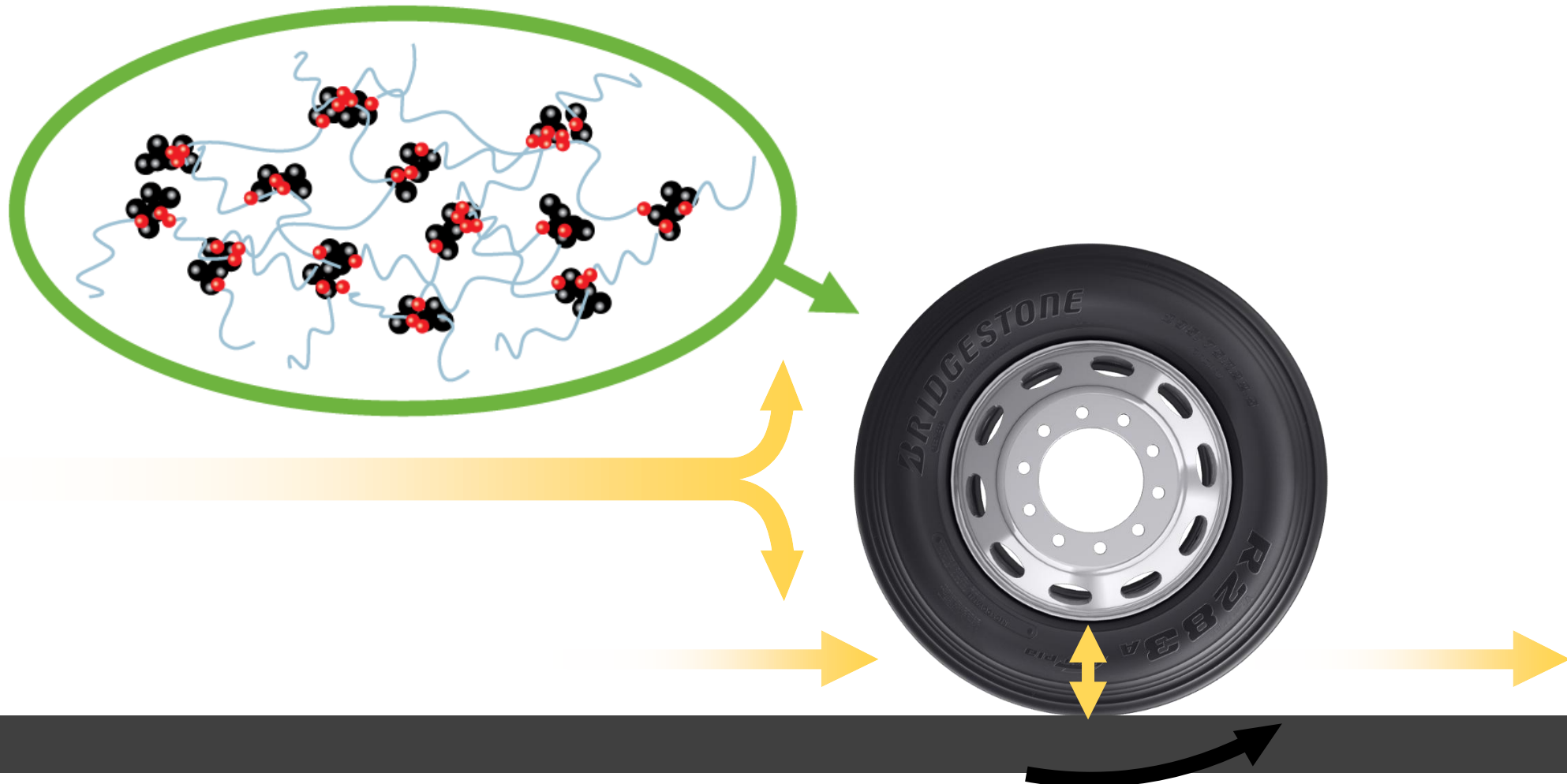
**D »»**

- Equalizer Ribs
  - Absorbs irregular wear, promoting uniform rib wear and higher removal mileage

**E »»**

- Stress Relief Sipes
  - Fights irregular wear on main ribs by absorbing rib edge stresses in the footprint for long, even wear

# NanoPro-Tech™



# Casing Design

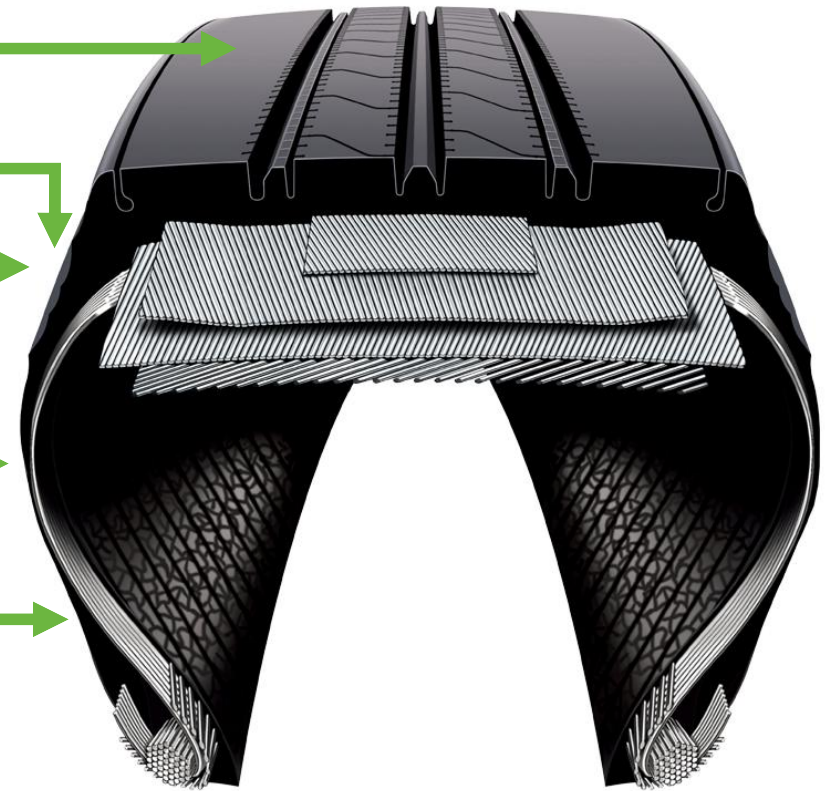
NanoPro-Tech™ Compound

Proprietary Shoulder Design

Lower Cap/Base Junction

Fuel Saver Sidewall

IntelliShape™ Sidewall



***BRIDGESTONE***

***R283A<sup>TM</sup>***



Long Life. Unique Design. Fuel Efficient.  
Longer Wear Life. Better Rolling Resistance.

[www.ecopiatrucktires.com](http://www.ecopiatrucktires.com)