



Introducing our new FD691  
Commercial Truck Tire

**Firestone**



### **FD691**

- Commercial drive tire for long and regional-haul applications
- Ideal for fleet owners
- High removal miles
- Highly-retreadable and long-lasting casings

**Firestone**



## FD691

- Low rolling resistance
- Lowest total cost of ownership
- Approved for use on EPA SmartWay<sup>SM</sup> certified vehicles
- Meets California Air Resources Board (CARB) requirements

**Firestone**



## FD691

Based on rolling resistance and field mileage tests:

- Our most fuel-efficient
- Lowest total cost of ownership tire solution when compared to other Firestone tires

It replaces:

- FD695 Plus
- FD690 Plus

**Firestone**



## FD691

Tie Bars:

- Control movement of center & second tread blocks
- Low rolling resistance
- Even wear

Continuous Shoulder:

- Reduced rolling resistance
- Controls movement of the ribs & blocks during rotation

**Firestone**



## FD691

### Flow-through Design:

- Allows for water evacuation to enhance road grip

### Deep 26/32nds Tread:

- More original tread life for high removal mileage

**Firestone**



## FD691

### NanoPro-Tech™ Polymer Technology:

- Limits energy loss for optimum fuel efficiency

### High-rigidity Tread Pattern:

- Reduced rolling resistance
- Controls movement of ribs & blocks during rotation

**Firestone**



## FD691

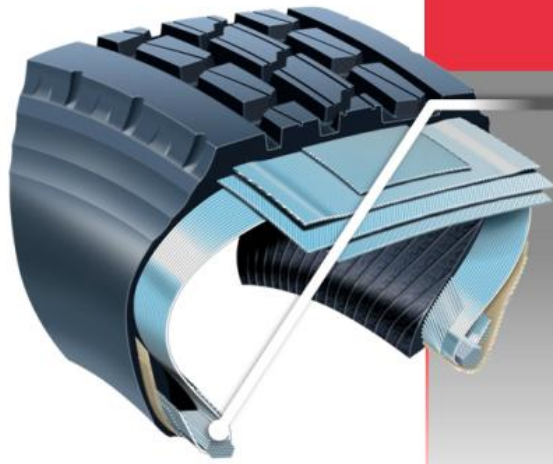
### Proprietary Sidewall Technology:

- Compound designed to limit heat loss
- Help improve fuel efficiency, (when new & when retreaded)

### Innovative Sidewall Design:

- Reduces overall tire weight
- Improve fuel efficiency without sacrificing durability

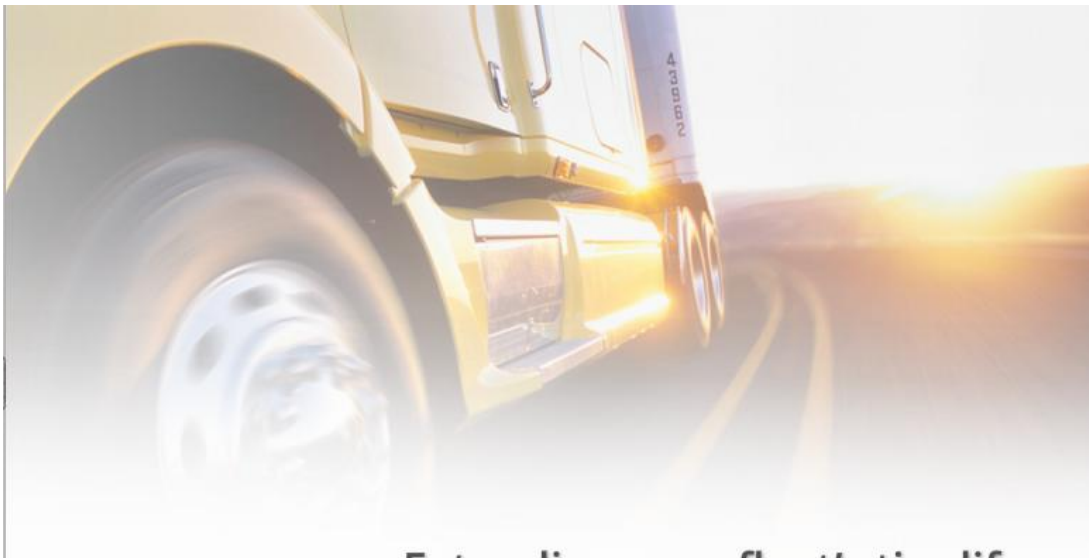
**Firestone**



## FD691

- Optimized Bead Design:
- Lowers rolling resistance
  - Improves fuel economy

**Firestone**



Extending your fleet's tire life  
And reducing your "Cost per Mile"

**Firestone**

Thank you for watching



[www.firestonetrucktires.com](http://www.firestonetrucktires.com)

**Firestone**